

# Passion

Moves Forward

to Serve



Highlights 2018-2019

Greater Washington Women's Network  
An affiliate of the National Association for Female Executives

# TABLE OF CONTENTS

03



04

07



## Details

- 03 [Message From Our Executive Director](#)
- 04 [Network Connections](#)
- 07 [Community Engagement](#)
- 10 [Recognition and Achievement](#)
- 12 [Education Information Center](#)
- 13 [Charitable Window](#)
- 16 [Our Passion Moves Forward](#)
- 20 [Takeaways](#)
- 28 [Photography](#)



# Message From Our Executive Director

Hello, I am Delighted to Greet You!

It is thrilling and emotional to make a small difference in a person's live. This program year our passion to serve gave us a healthy warm heartbeat as we shared resources, promoted business networking, educational and other training information, volunteered and aided others.

*Our Mission is to advance and promote our members, business and professional women, through education, networking, community services, resources and youth development.  
Our Vision is to transform and empower business and professional women to reach their greatest potential and help others to succeed.*

Come with me on this journey to read comments on how [Our Passion Moves Forward](#), recognize Pat Henry and Jessica Stamp two remarkable women outstanding [achievements](#), open your mind to our breathtaking [takeaways](#), discover a story, a message, and new inspirations.

We invited you to navigate through our highlights from the [Table of Contents](#), and the hyperlinks in each chapter. The back and forth features are convenient to quickly capture information.

On behalf of **GWWN** Executive Board, thank you for your support and donations over the years. Join our passion moving forward serving to empower others and assist us to broaden **GWWN**.

A Timeless Connection,

*Mary Greene*

Executive Director

*"I believe, it's just as important to do your best as it is to be number one.*





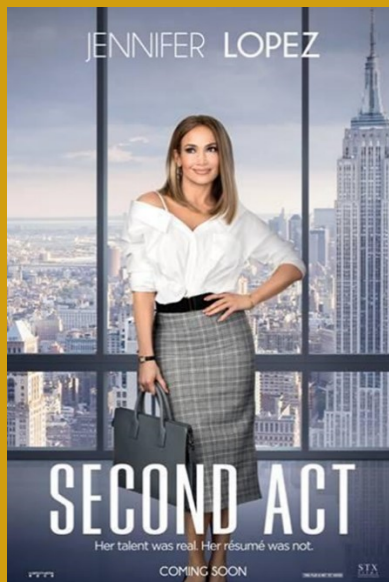
## Network Connections

### Educational and Entertainment

Passion about serving is being excited to promote other organizations programs and [networking opportunities](#). Sometimes there are unexpected assets. GWWN received complimentary invitations to two events.

### SECOND ACT

Screening film on Thursday, November 8<sup>th</sup> and Monday, November 12, 2018  
An inspirational comedy starring Jennifer Lopez as Maya

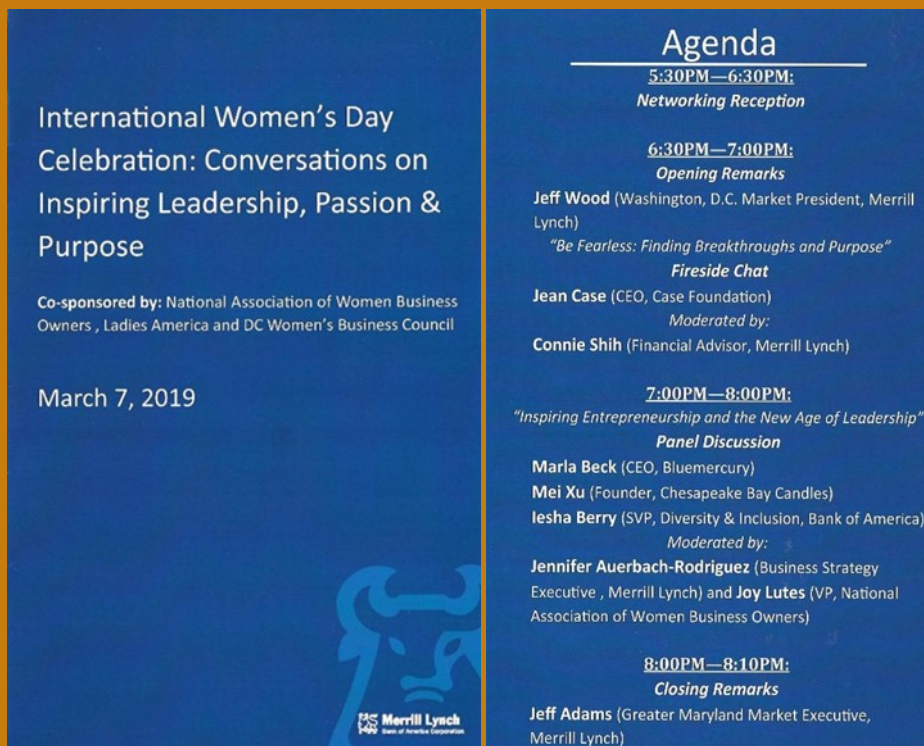


Regal Gallery Place, DC and Regal Majestic, Silver Spring, MD

# International Women's Day Celebration: Conversations on Inspiring Leadership, Passion and Purpose

Thursday, March 7, 2019

Merrill Lynch  
Bank of America Corporation  
Co-sponsored by: National Association of Women Business Owners  
Ladies America and DC Women's Business Council



**International Women's Day  
Celebration: Conversations on  
Inspiring Leadership, Passion &  
Purpose**

Co-sponsored by: National Association of Women Business Owners, Ladies America and DC Women's Business Council

March 7, 2019

**Agenda**

**5:30PM—6:30PM:**  
*Networking Reception*

**6:30PM—7:00PM:**  
*Opening Remarks*

**Jeff Wood** (Washington, D.C. Market President, Merrill Lynch)  
*"Be Fearless: Finding Breakthroughs and Purpose"*

**Fireside Chat**

**Jean Case** (CEO, Case Foundation)  
*Moderated by:*  
**Connie Shih** (Financial Advisor, Merrill Lynch)

**7:00PM—8:00PM:**  
*"Inspiring Entrepreneurship and the New Age of Leadership"*

**Panel Discussion**

**Marla Beck** (CEO, Bluemercury)  
**Mei Xu** (Founder, Chesapeake Bay Candles)  
**Iesha Berry** (SVP, Diversity & Inclusion, Bank of America)  
*Moderated by:*  
**Jennifer Auerbach-Rodriguez** (Business Strategy Executive, Merrill Lynch) and **Joy Lutes** (VP, National Association of Women Business Owners)

**8:00PM—8:10PM:**  
*Closing Remarks*

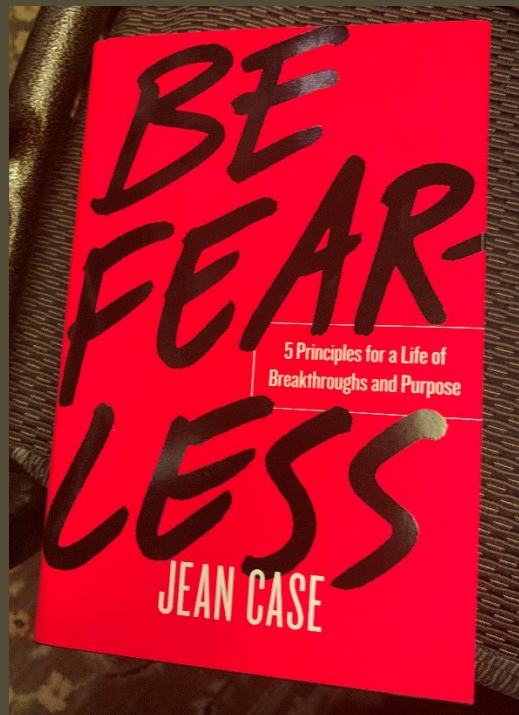
**Jeff Adams** (Greater Maryland Market Executive, Merrill Lynch)

Congressional Country Club, 8500 River Road, Bethesda, MD

Complimentary Invitation- A Perk!

One of the benefits of GWWN's membership is the opportunity to receive complimentary invitations to network at various events. The invitations are extended to members first, followed by guests.

At this event, Jean Case (CEO, Case Foundation) and Connie Shih (Financial Advisor, Merrill Lynch) kicked-off the conference with a Fireside Chat on the topic, "Be Fearless: Finding Breakthrough and Purpose." Ms. Case authored a book titled, "Be Fearless - 5 Principles for a Life of Breakthroughs and Purpose," and gave copies to the first 100 attendees.



There was a panel discussion with Marla Beck (CEO, Bluemercury), Mei Xu (Founder, Chesapeake Bay Candles), Iesha Berry (SVP, Diversity & Inclusion, Bank of America), Jennifer Auerbach-Rodriguez (Business Strategy Executive, Merrill Lynch), and Joy Lutes (VP, National Association of Women Business Owners).

The lunch, educational information, contacts, and energy were amazing and refreshing. GWWN was honored to receive the invitation. What a power opportunity to celebrate International Women's Day.

# Community Engagement

## Maryland New Directions



During the holiday seasons volunteers are critically needed in the [community](#) and organizations to assist with regular and special tasks. GWWN answered the call to provide support to Maryland New Directions (MND), 2700 N. Charles Street, Ste. 200, Baltimore, MD on November 29, 2018. Our service was in preparation for their upcoming Holiday Open House on December 14, 2018.





MND Intern: Bonnie Poinsette and below





# Recognition and Achievement



GWWN takes pride in honoring achievements.

## RETIREMENT



Pat Henry retired on February 1, 2019, from the District of Columbia Mayor's Office of Partnerships and Grant Services. She served more than 20 years working with nonprofit organizations within the District of Columbia metropolitan area (DMA). Retiring at 71 years old which was an outstanding milestone, Pat said: *"I retired because I wanted to not because I had to"*. Pat provided capacity building training/support and an online e-newsletter called the Funding Alert. When Pat retired, she had impacted more than 1,000 nonprofit organizations providing them workshops on how to become nonprofit organizations, board development, fund raising, and whatever she felt they needed to build the capacity of their organization. Pat said: *"It was a most rewarding experience"*

*watching those organizations grow.* “One of her major achievement was improving *The Funding Alert* publication communication, moving from a fax (100 subscribers) to an e-newsletter, with a distributed to over 17,000 subscribers to nonprofit organizations throughout the DMA.

She is now involved in a Health and Wellness Company that focuses on the many health benefits of Ginger and Turmeric. Pat said.” *I am not retired. I’ve just “reinvented” herself.*”

## EARNED A MASTER’S DEGREE



**GWWN** is proud of the many accomplishments of Jessica Stamp, one of our June 10, 2010 Leadership Award Program (LAP) academic scholarship recipients. Jessica received a Master of Arts (M.A) degree in Strategic Communication Public Relations from Trinity University on May 18, 2019. She also has earned a B.A in Business Administration and Communications in 2014.

Jessica holds Miss Black District of Columbia USA 2019 title sponsored by the Miss Black USA Scholarship pageant. This August she competed for the Miss Black USA title.



She is currently Assistant Director for Enrollment Development at Trinity Washington University.

Jessica said *“GWWN added credit to my achievements by providing an academic scholarship. I have been strengthened and empowered by GWWN. Thank you GWWN for believing in me.”*

# Education and Information Center



## Published

### GWWN Newsletter

No. 18, March 2019

["The Vision You" - National Women's History Month](#)

No. 19, April 2019

["Are We There Yet?" National Women's Health Week](#)

### NAFE News and Notes

No. 151 - April 11, 2019

### GWWN Community Resources Information Newscast

No. 13, [December 2018](#)

## Resources

Employment and Resumes  
Resources and Referrals Assistance  
Mentoring and Coaching

*Strengthening-Learning-Inspiring-Sharing-Leading*

# Charitable Window



**GWWN** charitable window consists of divided windowpanes to enhance the organization. Each windowpane plays a pivot role in connecting, serving, and learning for career and personal development to make a difference. Read on to explore more.

## Partnerships

- Community Crisis Center
- Idealist
- Maryland New Directions
- Office of African Affairs
- Office of Partnerships and Grant Services
- The Training Source, Inc.
- Volunteer Match
- Watha T. Daniel/Shaw Public Library, DC
- Washington Network Group
- Women Calendar
- Working Mother Media

## Volunteerism

**GWWN** is an organization operated by members and volunteers. It was founded in 1995. There is no salaried staff. Our team has a passion to serve others. GWWN's membership consists of women from various backgrounds. **GWWN** is an affiliate of the National Association for Female Executives, (NAFE), one of the largest renowned women's professional associations in the United States, founded in 1972.

**GWWN** promotes volunteerism. A few benefits are... (1) limitless opportunities to achieve careers and professional goals, (2) networking, (3) learning new skills, (4) building relationships with other dynamic professional and businesswomen, and (5) making a positive impact in the community. Internships are available for academic credit and professional development. Volunteers are very important for the success of our program. Sometimes their service is for a project, or for a few hours. It all adds up to help us reach our goals.

## BOARD OF DIRECTORS

Mary Greene.....Executive Director

Cheryl Blount..... Secretary

Jenifer Golson..... Treasurer

Cheryl Blount..... Director of Membership

## HONOREE VOLUNTEERS

Victor Adams	Helen Lawson
L'Tange Alexander	Julie Och
Gloria Blackwell*	Donna Platon
Oliver Caceres	Alysee Weilmuenster
Marilyn Dawson	Samuel Whitfield*
Novella Gumbs *	Frances Simpson, Community Service Chair
Frederick Isler *	
*Boosters	

## Donations

**GWWN** is a 501(c) 3 nonprofit organization. We operate on donations, monetary and in-kind gifts. All monetary gifts are used for the organization's services. We accept any donations [on-line](#) through our website, or via our Post Office box, 65532, Washington, DC 20035.

## Spirit of Gratuity

**GWWN** appreciates all volunteer services, information, assistance, and monetary gifts everyone provided to the organization. You have made a difference!

- Our Charities Contributions
  - Generation Hope
  - Global Society For Female Entrepreneurs
  - Maryland New Directions
  - Suited for Change
  - The Training Sources Inc.
- Unique Benevolent Gifts

## Greater Washington Women's Network, **GWWN**

An affiliate of the National Association for Female Executives, NAFE

## Membership Fees

**GWWN**.....\$40.00

NAFE..... \$39.00

Both Organizations..... \$79.00

[Join both organizations](#) for greater benefits

# Our Passion Moves Forward



Passion is a word that knows no boundaries or limitations, it knows nothing about adversity, or economic crisis. To transform a live at any level is the passion propels **GWWN** to move forward serving others despite the challenges. Our desire is to do our best. Here we share some outcomes and feedback.

- We did not host any networking event this year. However, we did promote other organizations events via our communication and word of mouth. In return, a bonus to us were two complimentary event invitations.

Feedback:

- *“What a wonderful surprise to receive complimentary invitations to attend events that I did not know about. Meeting other business and career women is always sensational because so much information is exchanged and shared. I am always inspired when I meet others and network. **GWWN** thanks for these unique opportunities.”*

Accomplishment:

- **GWWN**: Helped our members to appreciate **GWWN**'s benefits and meet new professional business leaders while gaining knowledge and information to develop their businesses and careers.
- Volunteering is important, but special during a critical need. **GWWN** was elated to assist MND when other volunteers were unavailable to serve.

Feedback:

- Stefanie Hopkin, MND Volunteer Engagement Manager, stated the following regarding community volunteering: *“During the holidays most people are busy with personal activities and do not have time to volunteer. **GWWN** quickly responded to our request to volunteer.”*



*Also, we had to change the date and they were very flexible. GWWN volunteers are always positive and energized. We are also encouraged when they come.*

Accomplishment:

- **GWWN:** Established credibility and value through partnership while serving others.

- Our educational Information Center is phenomenal not only to **GWWN** members, but others on our mailing list, email contacts and phone calls.

Feedback:

- *“The **GWWN** newsletter and the Community Resource Information Newscast communication are captivating, timely, contain information and resources that I can use. Also, I am inspired by the achievements of the magnificent women **GWWN** showcase. I share the information.”*
- *“During my job search, **GWWN** assisted me with resources, and job-hunting information. **GWWN** provided feedback on my resume and encouraged me not to give up. They took time to answer my questions. **GWWN** helped to take the fear out of my job search. I will always be grateful for **GWWN** service.”*

Accomplishment:

- **GWWN:** Served as a powerhouse to build confidence, our resources assisted members and other with business and career knowledge and information. Personal touches through coaching and mentoring demonstrated how **GWWN** cares about others.

- A donation goes a long way.

Feedback:

- Suited for Change, Jamshed Mullar, Acting Executive Director, with gratitude wrote: *“Thank you **GWWN** for your financial donation. Because of your generosity and that of hundreds of other Suited for Change donors, we have been able to serve more than 1,550 clients this year, a new record.”*

*“Each client served by Suited for Change means one more person or family with financial independence, a restored sense of dignity, increased self-sufficiency, and real hope for a brighter future. Your sustained support strengthens the community and helps to eradicate poverty here in DC.”*

Accomplishment:

- **GWWN:** Increased the financial status and supported the mission and vision of other nonprofit organizations to transform lives.

- A new unique chapter is “*Takeaways*”. A picture is worth a thousand words. We used photos in our communication and publications to enhance the meanings. We *believe* this is appropriate. It is designed to lift your spirit and give you something to think about, a story and a message.

Feedback:

- Your comments would be appreciated.

Accomplishment:

- **GWWN:** Raised awareness how a story and message are achieved through photos to build esteem, establish goals, appreciate life and other skills and talents.

- Scholarship: In addition to Jessica Stamp

Feedback:

- One of our members was approached by a former scholarship recipient. She was ecstatic to share the impact **GWWN** had in her life. She said, “*I remembered you from **GWWN**. I received a scholarship from **GWWN** to continue my college education when it was needed. I understand now the importance of doing your best and keeping a good academic grade point average. It paid off for me. Thank you so much.*”

Accomplishment:

- **GWWN:** Remembered how the evaluation and selection process to select candidates for the academic scholarship program was rewarded through excellent achievers. Appreciated the positive impact **GWWN** made in students’ lives.

- **GWWN** is an organization that cares and will be there for you.

Feedback: A member shares her heartfelt story.

- “*When my sister passed unexpectedly this year, **GWWN** was there to comfort me and my family. Although they had never met my mother and my siblings, they reached out to them even weeks after the funeral, **GWWN** followed up with telephone calls and texts to check on me. They showed so much love and compassion and their words of encouragement helped me to be stronger.*”

*“My family was touched by their actions. It really made a difference during this time when I had a shoulder to lend and cry on. Out of the many organizations where I am a member, **GWWN** is matchless and awesome! I will never forget the support I received from them. I love **GWWN**.”*

Accomplishment:

- **GWWN:** Exposed **GWWN** ‘s visibility and value beyond the membership by extending it to others outside of the organization.

➤ Investment in our mission and vision: Clothing Drive and donation

Feedback:

- E. Kim Rhim, Executive Director, The Training Source, Inc., shared: *“Thanks for **GWWN** donation to The Training Source on September 12, 2018. Thank you for your investment in our mission and vision. We were delighted when we met last year and **GWWN** delivered a huge donation of professional clothing for job seekers. Since then, we have received and distributed information about your programs, and we will continue to do so.”*

Accomplishment:

- **GWWN**: Demonstrated the importance of supporting organizations with similar mission and vision to empower others. Recognized how very positive actions makes a different to extend **GWWN**'s successes.

These examples are a few of **GWWN**'s remarkable contributions are making a difference. Mary Greene, Executive Director often said: *“It's just as important to do your best as it is to be number one.”*

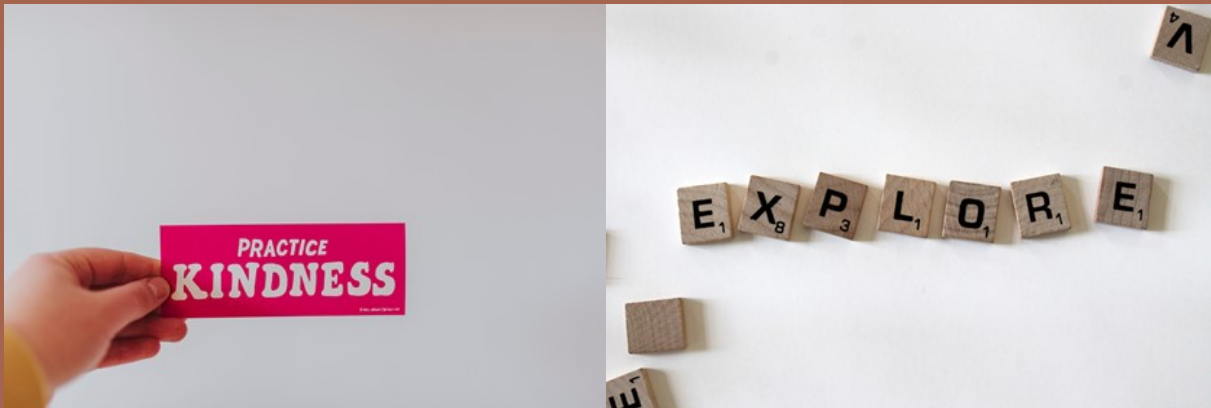
**GWWN** calls on you and others to assist and support us in our passion to move forward in the future serving through:

***Our Mission** is to advance and promote our members, business and professional women, through education, networking, community services, resources and youth development.  
**Our Vision** is to transform and empower business and professional women to reach their greatest potential and help others to succeed.*

# Takeaways

Feeding: Mind Thoughts  
*A Story and a Message*











O travellers from  
somewhere else to here,  
Rising from Sheffield Station  
and Sheaf Square  
To wander through the  
labyrinths of air,

Pause now, and let  
the sight of this sheer cliff  
Become a priming-place  
which lifts you off  
To speculate  
What if..?  
What if..?  
What if..?

Cloud-shadows drag  
their hands across  
the white;  
Rain prints the sudden  
darkness of its weight;  
Sun falls and leaves the  
bleaching evidence of light.

Your thoughts are like  
this too: as fixed as words  
Set down to decorate  
a blank façade  
And yet, as words are too,  
all soon transferred

To greet and understand  
what lies ahead –  
The city where your  
dreaming is re-paid,  
The lives which wait  
unseen as yet, unread.

WHAT IF?  
Andrew Motion  
Off The Shelf 2007



## Andrew Motion: What If?

Sir Andrew Motion, is an English poet, novelist, and biographer, who was Poet Laureate of the United Kingdom from 1999 to 2009.

A new poem by Poet Laureate Andrew Motion adorns the side of a Hallam University building for *Off The Shelf 2007* literature festival.

### Sheffield Hallam University

Sheffield Hallam University is a public research university in Sheffield, South Yorkshire, England and one of the UK's largest and most diverse universities. [Wikipedia](#)

Address: Howard St, Sheffield S1 1WB, UK

## What If?

O travellers from somewhere else to here  
Rising from Sheffield Station and Sheaf Square  
To wander through the labyrinths of air,

Pause now and let the sight of this sheer cliff  
Become a priming-place which lifts you off  
To speculate  
What if...?  
What if...?  
What if...?

Cloud shadows drag their hands across the white;  
Rain prints the sudden darkness of its weight;  
Sun falls and leaves the bleaching evidence of light.

Your thoughts are like this too: as fixed as words  
Set down to decorate a blank facade  
And yet, as words are too, all soon transferred

To greet and understand what lies ahead  
The city where your dreaming is re-paid,  
The lives which wait unseen as yet, unread





*GWWN Appreciates You!*

Please don't forget to donate.  
We accept any donations [on-line](#) through our website, or via  
our **GWWN** Post Office Box, 65532, Washington, DC 20035.  
Communicate with us at [gwwenet@gwn.org](mailto:gwwenet@gwn.org)

Photography

Shahid Abdullah, Gerd Altmann, Abraham Garcia, D'Andre Mitchell-Taylor, Jenifer Golson, Pat Henry, Internet, Merrill Lynch, Bank of America Corporation, Maryland New Direction, S. Hermann & F. Richter, Andrew Neel, Austin Schmid, Christine Sponchia, Tracia, Susan Yin

Takeaways: Clay Banks, Gary Butterfield, Kyle Glenn, Amanda Jones, James Lee, LaTerrian McIntosh, "My Life Through A Lens", Herbanu Tri Sasongko, Sandrachile Ian Schneider, Brigitte Tohm, Ty Williams

Greater Washington Women's Network, **GWWN**

P. O. Box 65532

Washington, DC 20035

202-580-8884

[www.gwwn.org](http://www.gwwn.org)

[gwwenet@gwwn.org](mailto:gwwenet@gwwn.org)

NAFE [www.nafe.com](http://www.nafe.com)

*Passion Moves Forward to Serve, Highlights 2018-2019*  
*Greater Washington Women's Network*  
*An affiliate of the National Association for Female Executives*  
© copyrighted; all rights reserved

